



Ford Road, London, E3

BUTLER  STAG



Guide Price £500,000 - £550,000

Welcome to Dethick Court, where contemporary design meets urban convenience in the heart of Bow. This stunning split-level three-bedroom maisonette offers a unique blend of style, space, and comfort, providing you the perfect home.



Leasehold

- Three Bedroom Duplex Maisonette
- West Facing Balcony
- Down Stairs Toilet
- Chain Free
- Historical Roman Road Market Close By
- Moments From Victoria Park
- 957 Sq/Ft Internal Living Space
- Modern Interiors
- Kitchen Diner

Located in the vibrant neighborhood of Bow, Dethick Court enjoys a prime location with easy access to an array of amenities and attractions. Just moments away from the award winning Victoria Park, an eclectic mix of shops, cafes, and restaurants that line the streets of Roman Road, or take a leisurely stroll along the nearby Regent's Canal.

Step into your new home and be greeted by a bright and airy living space, characterized by high ceilings, modern finishes, and stylish decor. The social flow of the main living seamlessly connects to the dining, and kitchen areas, creating an inviting space perfect for both relaxing and entertaining.

The kitchen is equipped with shaker design cabinetry, organic countertops, and ample storage space, making meal preparation a pleasure.

The maisonette features three spacious bedrooms spread across the top level, offering privacy and flexibility for you.

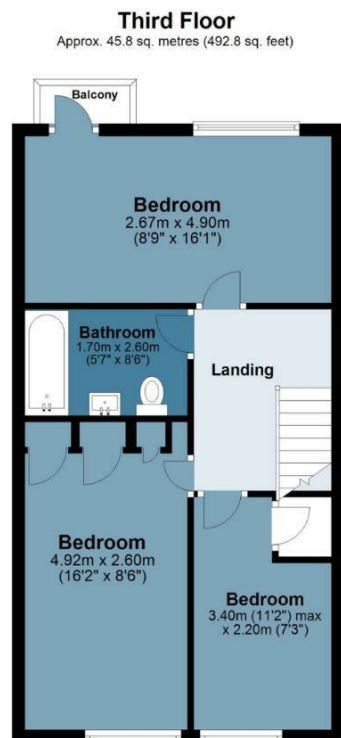
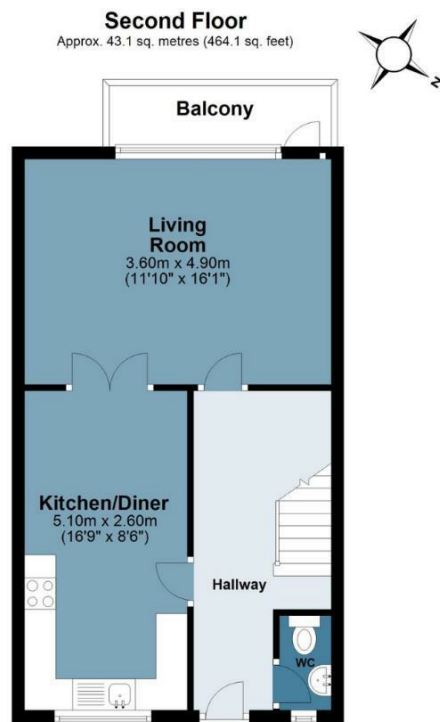
Dethick Court is within striking distance of the award winning Victoria Park one of east London's most spacious alfresco-eating spots, with two lakes, a boating pond, playgrounds, and a scattering of other Instagram-worthy delights. Excellent transport links are nearby, including several bus routes into the City, whilst Mile End (Central, District and Hammersmith & City) and Bow Road (District and Hammersmith & City) are just about equidistant from the property.





Dethick Court

Approx. Gross Internal Area 88.9 sq. metres (957.0 sq. feet)



Measurements are approximate and for illustration purposes only. While we do not doubt the accuracy and completeness, we advise you conduct a careful independent assessment of the property to determine monetary value
© @modephoto.uk www.modephoto.co.uk

BUTLER & STAG

BUTLER & STAG

☎ 020 8102 1236

🏠 508 Roman Road, Bow, London, E3 5LU

✉ bow@butlerandstag.com

www.butlerandstag.uk

IMPORTANT NOTICE - These particulars have been prepared in good faith and they are not intended to constitute part of an offer or contract. We have not performed a structural survey on this property and the services, appliances and specific fittings have not been tested. All photographs, measurements, floor plans and distances referred to are given as a guide and should not be relied upon.